

What's New for Students and Proctors

For the fall 2014 release of Web-based MAP, there are only a few small changes to the testing software.

Students have an improved calculator

The onscreen calculator included in MAP math tests has improvements such as:

- backspace key
- +/- button, which many students now expect

Students can Reset a question

A new **Reset** button at the bottom of the test enables students to reload the question. Reset is useful when a student wants to clear the choices made and start over.

Students can attempt Resume after a connection problem

In the event of an internet failure or other technical issue, a new message appears on the student's computer with a button to try and resume testing. If successful, and the student was still in the middle of a question, then the same question should resume. Or, if the student had just finished a question, then the next question appears.

14-day limit for suspended tests

It is no longer possible to resume tests that have been suspended for more than 14 days. After 14 days, the tests automatically terminate and students will need to start the test over. The 14-day limit has been a recommendation and is now a requirement, because too many days of instruction between suspending and completing a test has the potential to influence the score.

Students restricted from taking the wrong test

Your district has the option to define which tests are appropriate for students, such as which grade level(s) may take a test. When this feature is set up, then tests that are inappropriate will be either hidden or blocked within the Manage Test sessions area of MAP. This reduces the risk of students taking the wrong test.

Potential Issue:

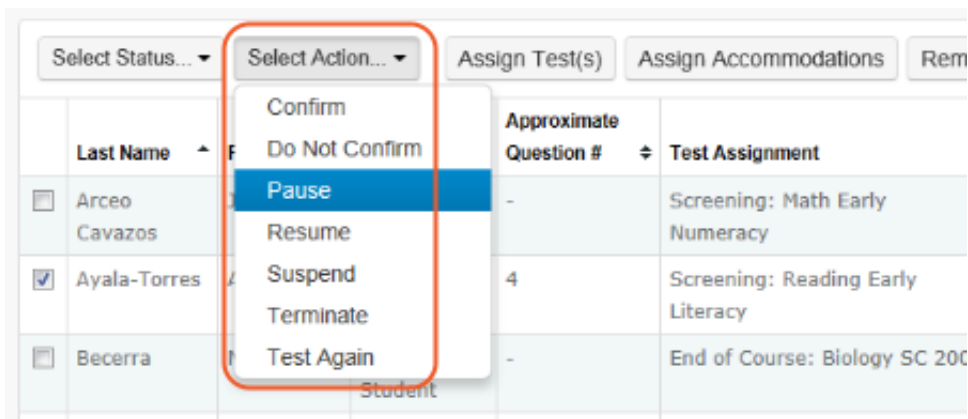
- ▣ **Confirm Student prompt shows "test restricted"**

CHANGES THAT BECAME EFFECTIVE IN SPRING 2014

Here's a summary of recent changes, in case you missed it.

Choose pause and other actions easily

You no longer need to click **Go**—the action works immediately.



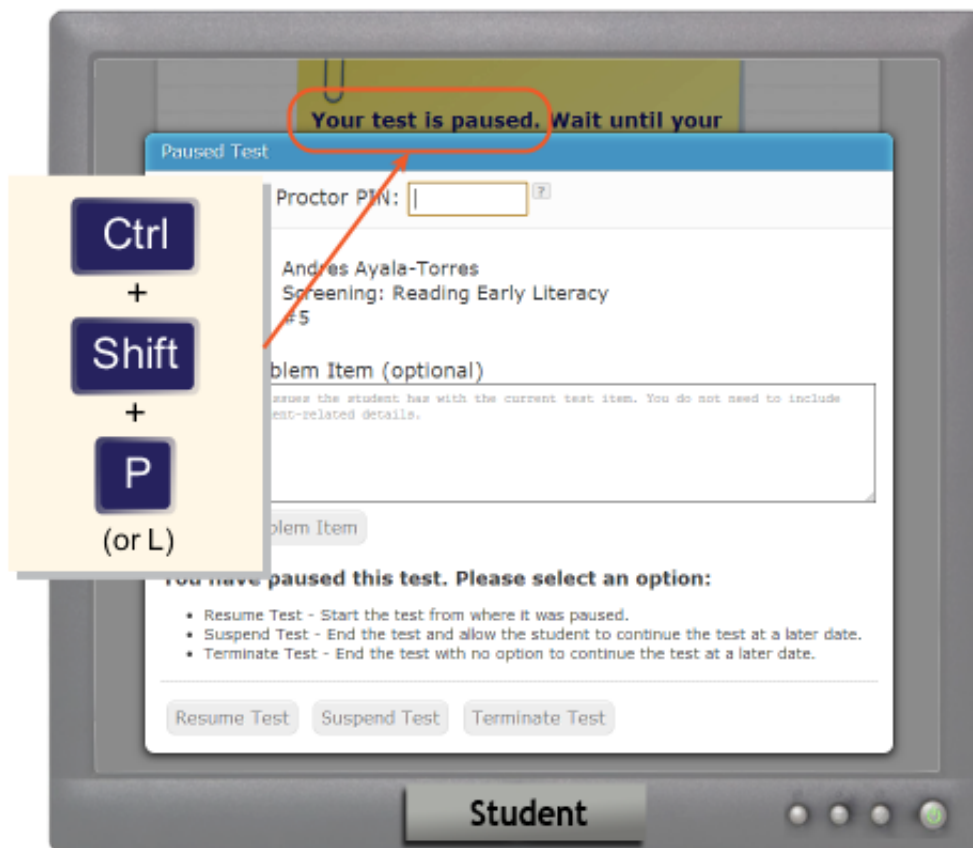
Interrupt from a student computer

As before, you can interrupt on the student computer using the shortcut:

Ctrl + **Shift** + **P** (or Ctrl+Shift+L)

However, now the test immediately pauses for that student. You no longer need to log in as a proctor.

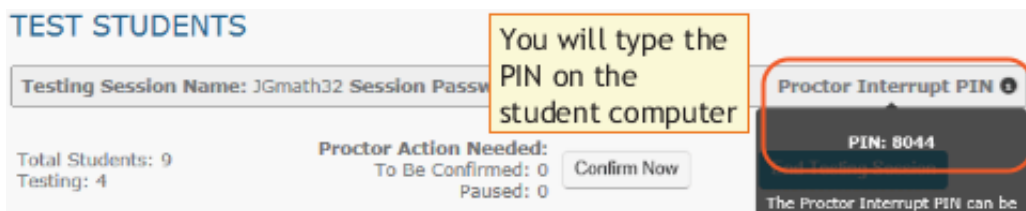
Note: This keyboard shortcut is not available on iPads.



To resume testing:

1. OPTION 1—Continue from your proctor computer using **Select Action > Resume**.
—or—

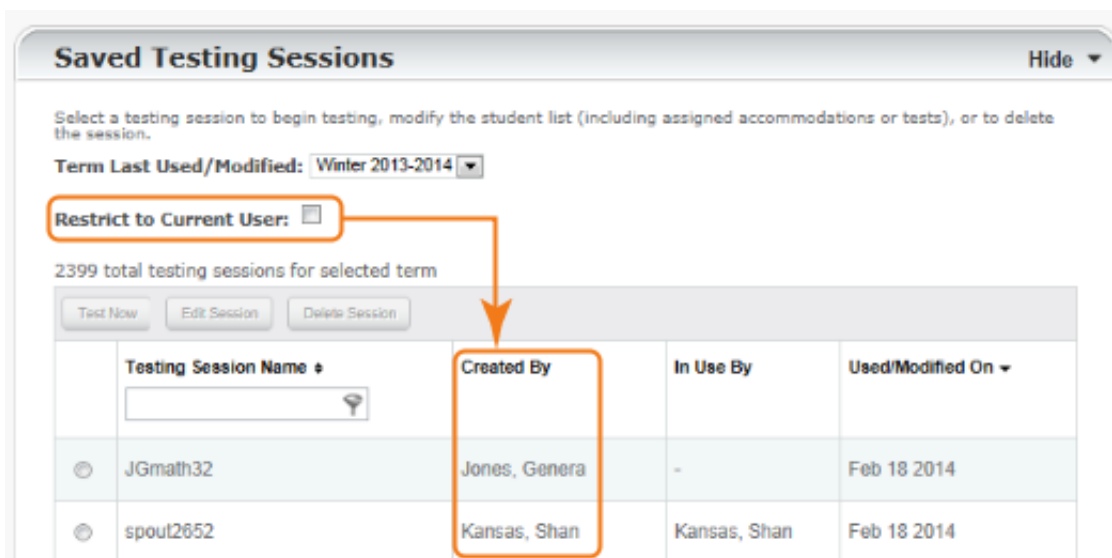
- OPTION 2—On your proctor computer, get the PIN code so you can continue on the student computer.



Once you type the PIN on the student computer, you can resume, report a problem with the test questions, or take other actions.

View the testing sessions that others have saved

Clear the **Restrict to Current User** check box to see all testing sessions in your district.



Students choose their name easily

They no longer need to type their name when signing in (although typing helps to select their name faster).



Various software issues addressed

Previously, you may have encountered students frozen or the status becoming out-of-sync with the student. This part of the software is now replaced.

Note: Prior troubleshooting instructions no longer apply. Instead, use the latest [troubleshooting instructions](#) (also in the [Proctor Tips and Troubleshooting](#) quick reference).

Learn More...

- Revised [Proctor Quick Start](#) online training
- Revised [Proctor Tips and Troubleshooting](#) quick reference (PDF download)

© 2010—2014 Northwest Evaluation Association. All rights reserved.
[Trademark Statements](#)